

## Specifications:

|   |                                    |
|---|------------------------------------|
| <b>Power output:</b> .....              | 50W*2 (0.775V input, 4Ω impedance) |
| <b>THD+N:</b> .....                     | 0.09% (at 100mV input)             |
| <b>Minimum speaker impedance:</b> ..... | 4Ω                                 |
| <b>SNR:</b> .....                       | -107dB (at 1KHz)                   |
| <b>Input impedance:</b> .....           | 20K for AUX Channel                |
| <b>Minimum input sensitivity:</b> ..... | 1.1V                               |
| <b>Maximum input sensitivity:</b> ..... | 2.5V                               |
| <b>Frequency response:</b> .....        | -1.5dB (20~20KHz)                  |
| <b>SUB level:</b> .....                 | 2.7VRMS Maximum                    |
| <b>Channel separation:</b> .....        | -60dB                              |
| <b>Efficiency:</b> .....                | 88%                                |
| <b>Dynamic range:</b> .....             | 129dB (at 1KHz)                    |
| <b>Electrical requirement:</b> .....    | 24V-32V                            |
| <b>Dimension:</b> .....                 | 5.2" x 5" x 1.2"                   |
| <b>Weight:</b> .....                    | 1.6 lbs                            |

## Package Contents:

- DTA-PRO 100W Digital Class D Amplifier
- 24V 4A power supply
- Multi-function remote control

## Important Safety Instructions

To reduce the risk of electric shock, do not remove cover. No user serviceable parts inside. Refer servicing to qualified personnel. To reduce the risk of fire and shock do not expose unit to rain or moisture. The unit should be connected to an earth grounded AC electrical socket. The unit should be operated in a well ventilated area. Minimum clearance is 2 inches.



## 5-Year Limited Warranty

See [daytonaudio.com](http://daytonaudio.com) for details



[daytonaudio.com](http://daytonaudio.com)  
tel + 937.743.8248  
[info@daytonaudio.com](mailto:info@daytonaudio.com)

705 Pleasant Valley Dr.  
Springboro, OH 45066  
USA



# 100 WATT CLASS D AUDIO AMPLIFIER

Model: DTA-PRO User Manual



**Thank you for purchasing the Dayton Audio DTA-PRO Class D Audio Power Amplifier.** This amplifier features 50W continuous power per channel (100W total) into 4ohm load. Class D amplifiers have the quality audio fidelity of a Class AB amplifier while providing up to 90% power efficiency. And with all the input/output options of the DTA-PRO, it is an ideal solution for most audio applications.

### Features:

- 50W per channel RMS (100W total) into a 4ohm load
- Quality audio output with less than 0.5% THD @ 50W
- Bluetooth wireless connectivity
- USB 2.0 input for direct interface to your computer
- Subwoofer output 1.5v RMS, 150 Hz fixed low pass
- Digital Coaxial Input
- S/PDIF optical input
- Front LED visual display panel
- 3.5mm Aux input
- Multi-function IR remote

### Front Panel:

#### 1. Volume/Bass-Treble/Mute control

Rotates to adjust the volume level up or down. Press and release knob to adjust bass, press again for treble and again for volume control. Press and hold the knob for mute function, press and hold again will unmute.

#### 2. Power/Source Select

Press and hold this button to turn power on or off, short press to select input source. The selected input source will be visually indicated at the top of the display panel (BT-Bluetooth, USB, OPT-Optical, COA-Coaxial, AUX-3.5mm)

#### 3. Audio Bit Rate Display

Visually indicates the current audio source bit rate

#### 4. LED Display Panel

Visually displays the status and settings of the DTA-PRO amplifier

### Rear Panel:

#### 1. Antenna Connection

Connect the included antenna for Bluetooth wireless operation

#### 2. USB (micro) Input

This USB 2.0 input allows you to play music directly from your computer with no additional software or drivers required. Simply plug and play for higher quality audio playback than the typical line output of a computer sound card.

#### 3. Aux Audio Input

3.5mm analog input

#### 4. S/PDIF Input

Toslink input for use with digital audio devices

#### 5. Coaxial Input

Digital Coaxial input for use with digital audio devices

#### 6. Subwoofer Output

RCA-type line level output

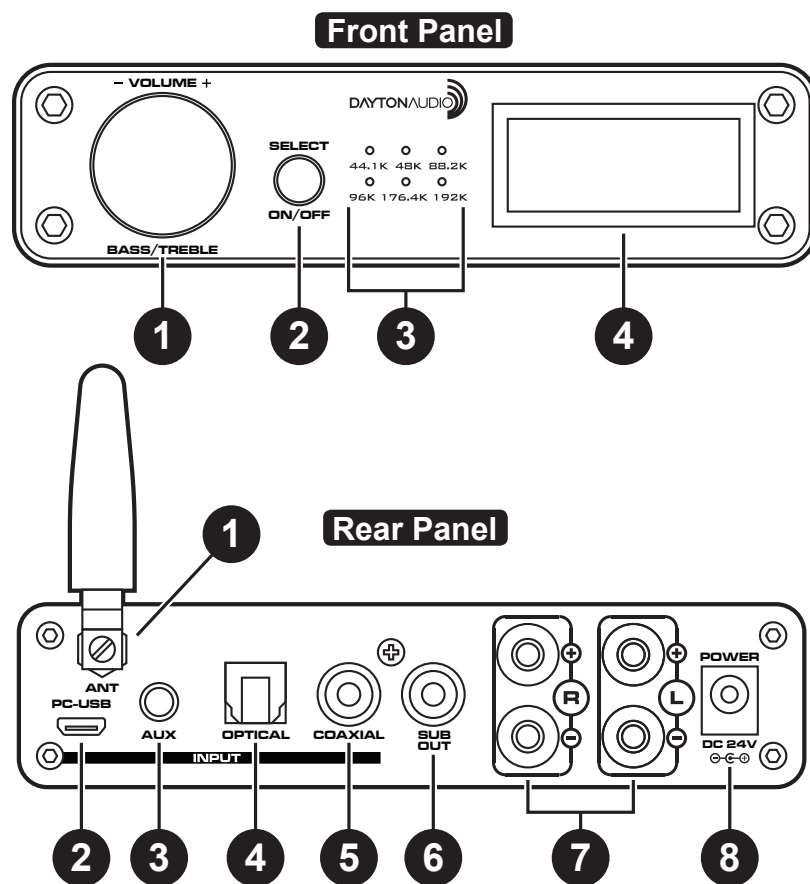
#### 7. Speaker Outputs

The speaker output connection binding posts are color coded for easy polarity identification.

#### 8. Power Connection

Connect included power supply to the power input port of the amplifier first, then connect to power source.

**Note:** An inappropriate power supply can damage the unit, and will void the warranty.



### Remote Control:

1. Power On/Off
2. Mute On/Off
3. Volume Up
4. Volume Down
5. Back/Reverse
6. Play/Pause
7. Forward/Skip
8. Bass/Treble (use volume up/down to change settings)
9. EQ choose from 6 presets
10. Input Select
11. Loudness On/Off
12. Direct Audio On/Off

