

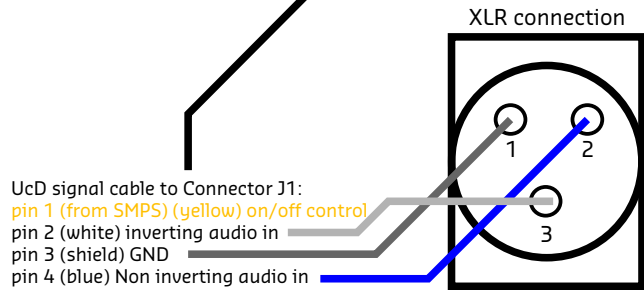
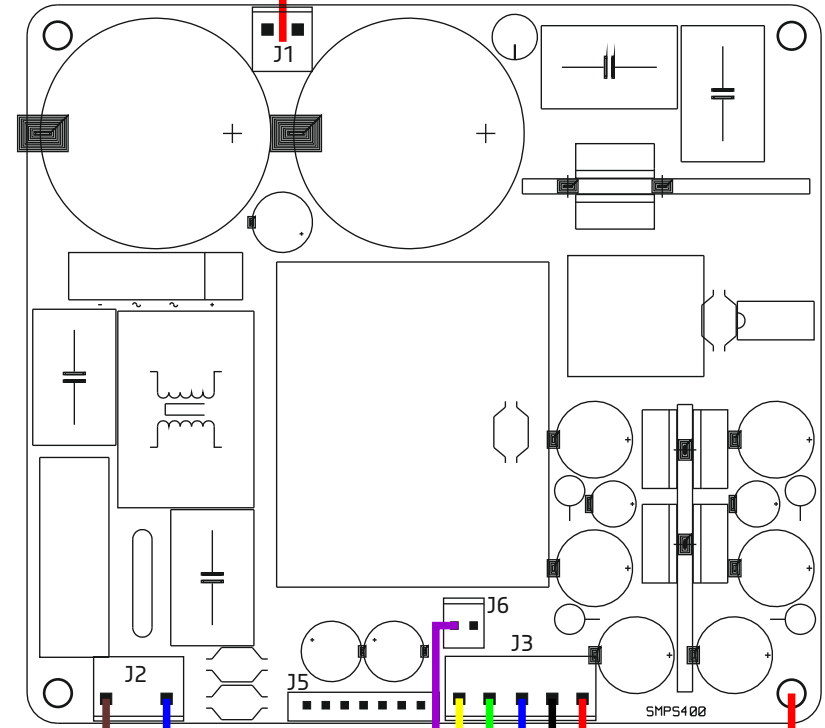
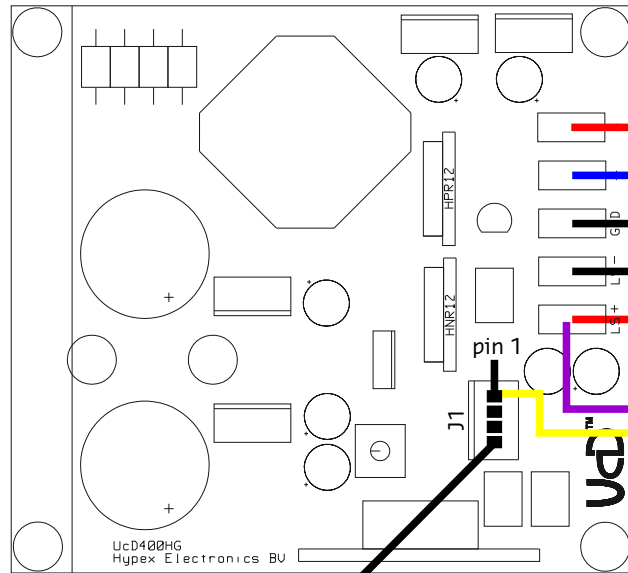
# wiring schematics: UcD400 + SMPS400A400

Amplifier: UcD400HG  
 SMPS: SMPS400A400  
 Cables used: SMPS400 cable set/UcD signal cable

**Always refer to the datasheets when building an amplifier and working with high voltage!**

**Drawings in this document are not to scale!**

**ONLY use jumper for 115V!!**



UcD signal cable to Connector J1:  
 pin 1 (from SMPS) (yellow) on/off control  
 pin 2 (white) inverting audio in  
 pin 3 (shield) GND  
 pin 4 (blue) Non inverting audio in

**mains!**

J5 is not needed in this application.

Use metal spacer!

**Do Not Use**  
 Cut wire at the connector!!