



NEW



TiCW 958Ft

Titanium Ultimate Woofer

Ø 9", Ø 5.1" voicecoil, 8Ω

SPECIFICATIONS

General Data

Overall Dimensions	DxH	222mmx125mm(8.74"x4.92")
Nominal Power Handling (DIN)	P	500W
Transient Power 10ms		1500W
Sensitivity 2.83V / 1M		85 dB SPL
Frequency Response		See graph
Cone Material		Composite cellular fiber
Net Weight	Kg	6.6 kg

Electrical Data

Nominal Impedance	Z	8Ω
DC Resistance	Re	6.3Ω
Voice Coil Inductance @ 1KHz	LBM	0.62 mH

Voice Coil and Magnet Parameters

Voice Coil Diameter	DIA	130 mm (5.1")
Voice Coil Height		33 mm (1.4")
HE Magnetic Gap Height	HE	12 mm (0.47")
Max. Linear Excursion	X	± 10.5mm (0.45")
Voice Coil bobbin		Titanium
Voice Coil Wire		Hexatech™ Aluminum
Number Of Layers		2
Magnet System Type		High Flux Double Ferrite Vented
B Flux Density	B	0.62 T
BL Product	BXL	14.6 N.A

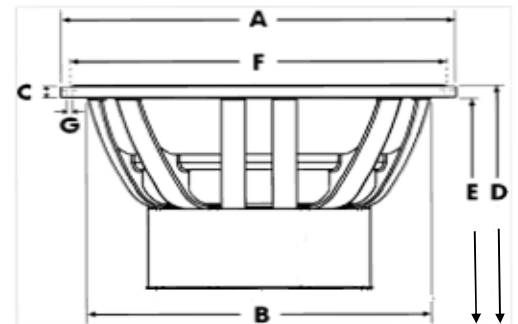
T-S Parameters

		Small Signal	1 V
Suspension Compliance	Cms		0.53 mm/N
Mechanical Q Factor	Qms		3.2
Electrical Q Factor	Qes		0.34
Total Q Factor	Qts		0.31
Mechanical Resistance	Rms		3.61 kg/s
Moving Mass	Mms		72.16 gr
Eq. Cas Air Load (liters)	VAS		45.4 Lt
Resonant Frequency	Fs		26 Hz
Effective Piston Area	SD		243 cm ²

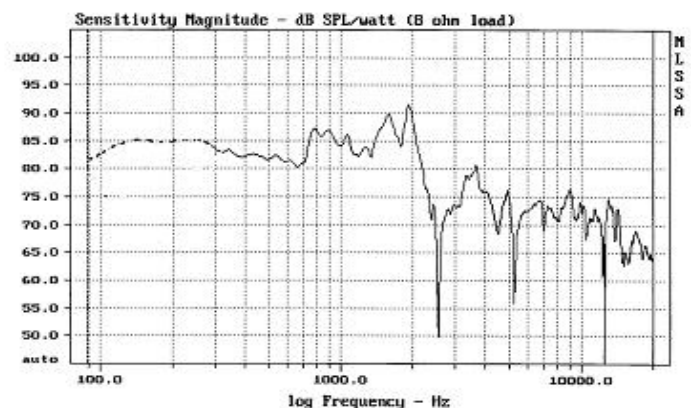
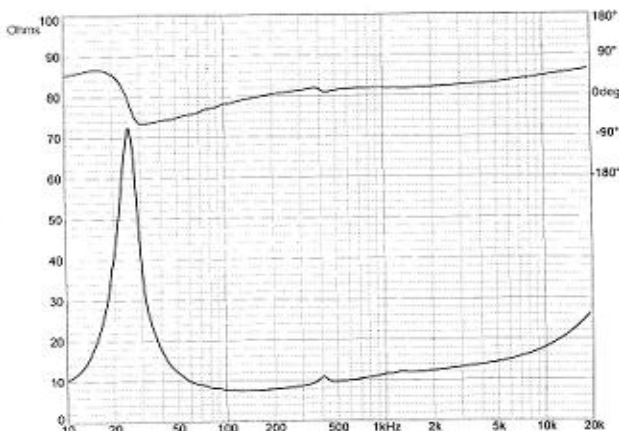
FEATURES

- * Uniflow™ Aluminum diecast chassis
- * High flux double Ferrite magnet system
- * Coppersleeve Neol™ Motor
- * 5.1" Large Hexatech™ Aluminum voice coil
- * Titanium coil bobbin
- * One piece paper cone/center dome
- * Accucenter™ self centering cone assembly

Unit Dimintions



A - Overall diameter	222mm
B - Cut out diameter	200mm
C - Flange thickness	5mm
D - Overall height	125mm
E - Basket/magnet depth	120mm
F - Mounting holes location diameter	213mm
G - 6 Mounting holes, at 60° interval, inner hole diameter	Ø 5mm



Measured on IEC baffle using Bruel & Kjaer 3144 model microphone.

Morel operate policy of continuous product design improvement, consequently specifications are subject to alteration without prior notice.