

VMM

Model: **A1**

使用说明书 | USER MANUAL

<http://www.smsl-audio.com/>

本说明书的内容可能会随版本更改, 如有变动, 恕不另行通知
The contents of this manual may be changed with the edition,
and are subject to change without notice.

Ver 1.0

安全注意事项

注意：

为防电击，请勿打开机盖(或后盖)。
本机内部无使用者可以维修的部件。
请委托有资格的技术人员进行维修。



注意
触电危险，
请勿打开。



等边三角形中有箭头闪电标号的图形表示警告使用者在产品内有非绝缘的“危险电压”，可能会对人体造成很大的电击危险。



等边三角形中有感叹号的图形表示警告使用者该设备在操作与维护(维修)方面应严格按照所附设备说明书。



仅适用于海拔2000m以下地区安全使用。

注意：为了完全切断本机的电源，请从墙上插座中拔出插头。电源插头用于完全中断机器的电源供应。

特点

- 经典场效应管甲类放大电路；
- 全铝CNC外壳, 美观的同时, 大大提高了散热能力；
- 前级采用并联稳压电源；
- 采用低失真, 高精密的音量控制芯片PGA2311；
- 耳机放大部分具备2档增益控制；
- 英国进口箭猪电源变压器；
- 具备机内温度显示, 更好把控音质；
- 高品质日本进口音频插座；
- 大量发烧级元件, 包括nichicon KG电容；
- 完善的保护电路, 保护您的喇叭和耳机；
- 彩色高分辨率显示屏；

目录

安全注意事项.....	1
特点.....	2
目录.....	3
技术参数.....	5
关于遥控器.....	6
部件介绍.....	7~8
主机前面.....	7
主机背面.....	8
显示界面和操作介绍.....	9-10
恢复出厂设置/保修条款.....	11

Table of content

Safety notes.....	12
Features.....	13
Specification.....	14
Remote Control.....	15
Functions.....	16~17
Main unit front.....	16
Main unit back.....	17
Operation Instructions.....	18~19
Factory Reset/Warranty Terms.....	20

技术参数

输入接口 RCA

输出接口 喇叭端子(香蕉头),6.35mm耳机座

THD+N0.01%(4Ω)

.....0.008%(8Ω)

.....0.002%(32Ω)

信噪比110dB

通道分离度105dB

输出功率15Wx2(4Ω)

.....10Wx2(8Ω)

.....2W(32Ω)

消耗功率30W

待机功率 <0.5W

体积.....210X205X39mm(WxHxD)

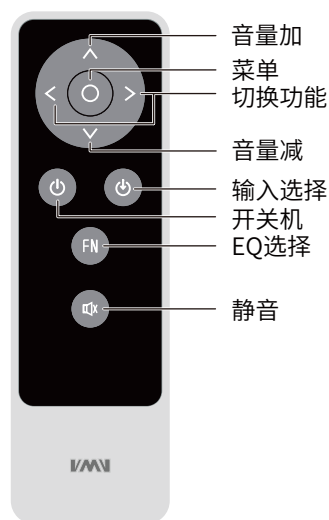
重量..... 2kg

关于遥控器

如果遥控器距离本机很近时操作仍无效，请用新电池更换。

如果要长时间不使用遥控器，请取出遥控器的电池。

按照电池处置的地方性法规处置废旧电池。



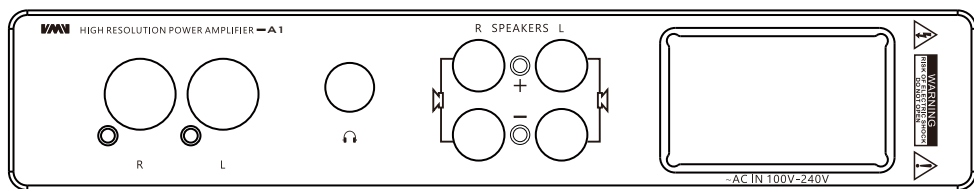
部件介绍

主机前面



1. 功能旋钮
2. 待机LED
3. 显示屏
4. 输出切换按键
5. 遥控窗口
6. 静音按键

主机背面



7

7

8

9

10

11

7. 线路输入

8. 耳机输出

9. 右喇叭输出

10. 左喇叭输出

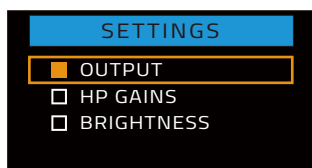
11. 电源输入 (100~240V AC)

显示界面和操作介绍



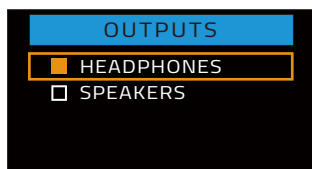
主界面

1. 输出选择
2. 音量显示
3. 静音时显示为红色
4. 温度检测



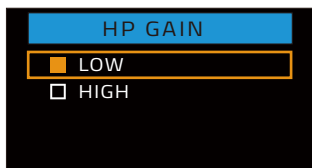
有3页的设置, 屏幕如下图所示

1. OUTPUT (输出选择)
2. HP GAINS (耳机增益选择)
3. BRIGHTNESS (亮度)



输出菜单

1. HEADPHONES (耳机输出)
2. SPEAKERS (功放输出)



耳机增益选择

1. LOW (低增益)
2. HIGH (高增益)



亮度调节范围:LEVEL 1-6

恢复出厂设置

机器在未通电状态下,按住电源键再通电,直到显示屏显示logo之后,松开按键。

保修条款

一、服务期限

佛山双木三林科技有限公司承诺产品的良好品质,产品自售出之后7天内正常使用情况下出现故障,客户可以选择退货或者保修(不影响二次销售才可退货)。正常使用一年内出现故障可以免费保修。

二、购买日期以销售商开出的购机发票或收据日期为准,网购可以交易截图为准。

三、有以下情况都不能享受“三包”服务

- 一切人为因素损坏,包括非正常工作环境下使用或不按照说明书使用;
- 用户私自拆机、改装、维修;
- 使用非指定或许可的配件造成损坏的;
- 机身的QC或保修贴损毁;
- 不能出示有效购机凭证;
- 不属于本公司产品。

四、保修方式为送修

此条款只适于中国大陆,其它地区请参考当地销售代理商的规定和国家法规。



Safety notes

CAUTION:

TO REDUCE THE RISK OF ELECTRIC SHOCK,
DO NOT REMOVE COVER(OR BACK).



The lightning flash with arrowhead symbol, with in an equilateral triangle, is intended to alert the user to the presence of uninsulated “dangerous voltage” within the product’s enclosure that may be of sufficient magnitude to constitute a risk of electric shock to persons.



The exclamation point within an equilateral triangle is intended to alert the user to the presence of important operating and maintenance (servicing) instructions in the literature accompanying the appliance.



Safe use only under elevation 2000m.

WARNING:

TO REDUCE THE RISK OF FIRE OR ELECTRIC SHOCK, DO NOT EXPOSE
THIS APPLIANCE TO RAIN OR MOISTURE.

Features

- Classical FET Class A amplifier circuit;
- The all-aluminum CNC shell, while being beautiful, greatly improves the heat dissipation capacity;
- The pre amp adopts parallel regulator power supply;
- Using low distortion, high precision volume control chip PGA2311;
- The headphone amplifier has 2 gears of gain control;
- Custom low-noise toroidal transformer manufactured by Noratel, UK
- With internal temperature display, better control sound quality;
- High quality audio socket imported from Japan;
- A large number of audiophile components, including nichicon KG capacitors;
- Perfect protection circuit to protect your speakers and headphones;
- Color high-resolution display;

Specification

InputsRCA

OutputsSpeaker terminal (banana connector), 6.35mm headphone jack

THD+N0.01%(4 Ω)

.....0.008%(8 Ω)

.....0.002%(32 Ω)

SNR110dB

Channel separation105dB

Output Power15Wx2(4 Ω)

.....10Wx2(8 Ω)

.....2W(32 Ω)

Power Consumption30W

Standby power<0.5W

Size210x205x39mm (WxHxD)

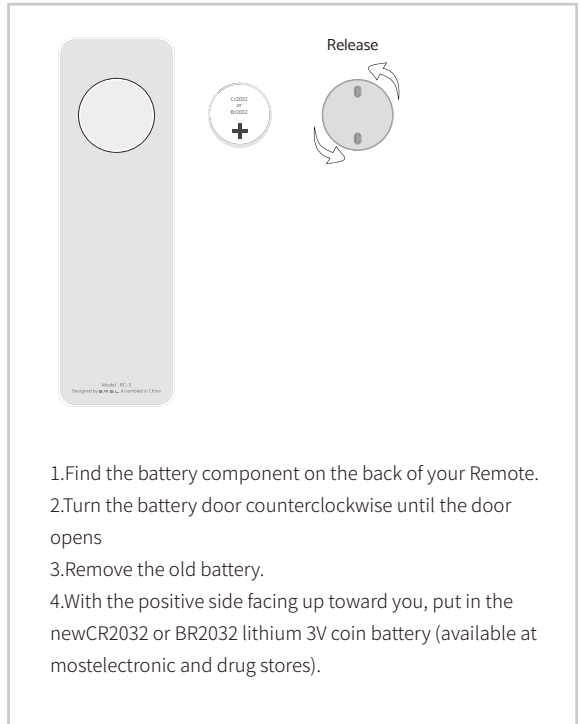
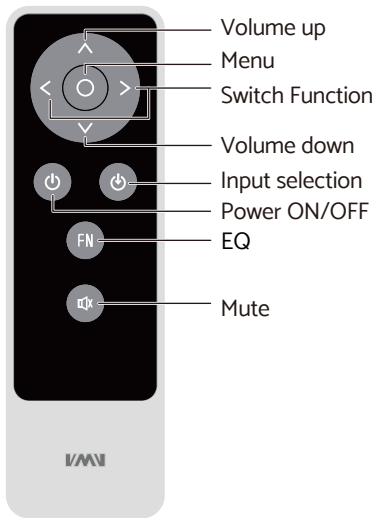
Weight2kg

Remote Control

Install CR2032 or BR2032 lithium 3V coin battery as instructions

When using the remote control, point it toward the remote control signal receiver on the main unit from a distance of 5 m (16 ft) or less. Do not place obstructions between the main unit and the remote control.

The remote control might not work if the remote control signal receiver on the unit is exposed to direct sunlight or bright light. If this occurs, try moving the unit. Beware that use of this remote control could cause the unintentional operation of other devices that can be controlled by infra.



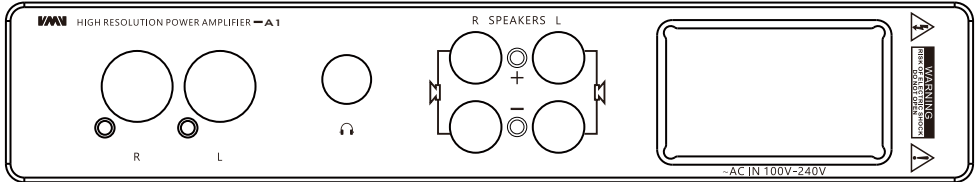
Functions

Main unit front



- 1. Multi-function knob
- 2. LED
- 3. Display
- 4. Output source select Knob
- 5. Remote window
- 6. Mute

Main unit back



7

7

8

9

10

11

7. Unbalanced input

8. Headphone output

9. Right speaker output

10. Left speaker output

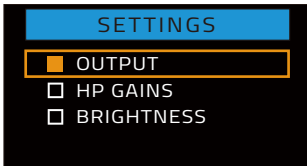
11. Power input (100V-24V AC)

Operation Instructions



Main Display

1. Input selection indication
2. Volume
3. Red when muted
4. input source name



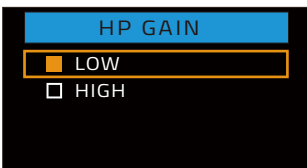
There are 3 pages of settings in this menu.

1. OUTPUT
2. HP GAINS
3. BRIGHTNESS



OUTPUTS

1. HEADPHONES
2. SPEAKERS



HP GAIN

1. LOW
2. HIGH



Brightness Level: 1 ~ 6

Factory Reset

Connect the power cord when pressing the power button, until the screen shows logo.

Warranty Terms

1.The Term of Service

Foshan Shuangmusanlin Technology Co., Ltd promises to offer good-quality products. If the product is broken in 7 days after purchasing when you use it normally, you can choose to send it back for return, replacement or repairing (only the product does not affect the second sales can be returned). Repairing for free in one year if you use it normally.

2.Date of purchase is in accordance with the date on invoice or receipt used by seller, and if you buy it on line, you can show the screenshot of trade.

3.If an inappropriate usage causes the unit damaged, the warranty will be void. As below.

- All damages by inappropriate use, including using it under non-normal working environment or without following the instructions.
- Dismantling, refitting, repairing by user in private.
- Causing damage by using some fittings instead of the designative or accredited ones.
- Cannot provide credible proof of purchase.

4.Sending it back to our company for repairing.

5.Contact your S.M.S.L Audio reseller for a return or replacement.