



NEW



# MSW-144

Slim 5" Woofer

Ø 5", Ø 3" voicecoil, 8Ω

## SPECIFICATIONS

General Data		
Overall Dimensions	<b>DxH</b>	142mm(5.59") x 52mm(2.05")
Nominal Power Handling (DIN)	<b>P</b>	150W
Transient Power 10ms		1000W
Sensitivity 1W/1M		87 dB
Frequency Response		See graph
Cone Material		Damped Polymer Composite
Net Weight	<b>Kg</b>	1.0Kg

Electrical Data		
Nominal Impedance	<b>Z</b>	8Ω
DC Resistance	<b>Re</b>	5.2Ω
Voice Coil Inductance	<b>LBM</b>	0.55 mH @ 1KHz

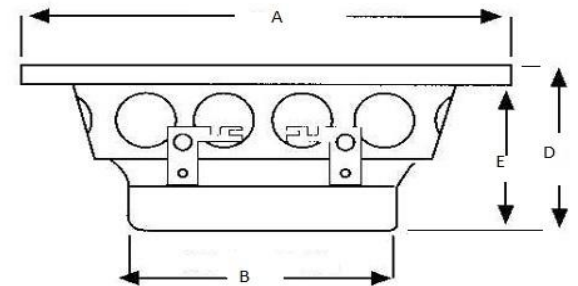
Voice Coil and Magnet Parameters		
Voice Coil Diameter	<b>DIA</b>	75 mm (3")
Voice Coil Height		12.0 mm( 0.47")
HE Magnetic Gap Height	<b>HE</b>	5 mm(0.2")
Max. Linear Excursion	<b>X</b>	(+ - )3.5 mm (0.137")
Voice Coil Former		Aluminum
Voice Coil Wire		Hexatech™ Aluminum
Number Of Layers		2
Magnet System Type		Double Magnet Ferrite
B Flux Density	<b>B</b>	0.68T
BL Product	<b>BXL</b>	6.2 N.A

T-S Parameters		small signal	1 V
Suspension Compliance	<b>Cms</b>	0.725 mm/N	0.671 mm/N
Mechanical Q Factor	<b>Qms</b>	2.25	2.00
Electrical Q Factor	<b>Qes</b>	0.55	0.47
Total Q Factor	<b>Qts</b>	0.44	0.36
Mechanical Resistance	<b>Rms</b>	1.93	2.14
Moving Mass	<b>Mms</b>	13.68 gr	13.68 gr
Eq. Cas Air Load (liters)	<b>VAS</b>	8.20 L	11.80 L
Resonant Frequency	<b>Fs</b>	50.5 Hz	42.5 Hz
Effective Piston Area	<b>SD</b>	90cm <sup>2</sup>	90 cm <sup>2</sup>

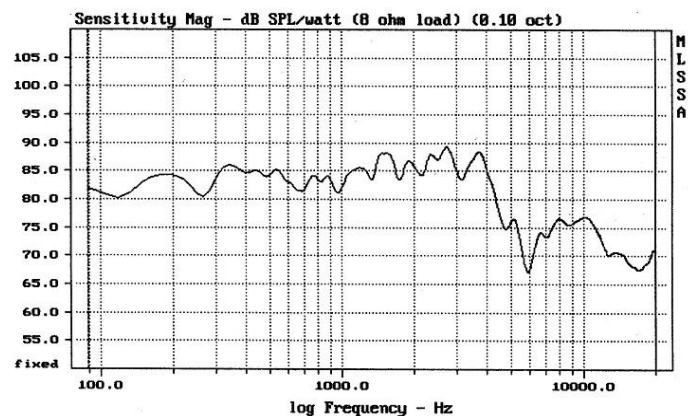
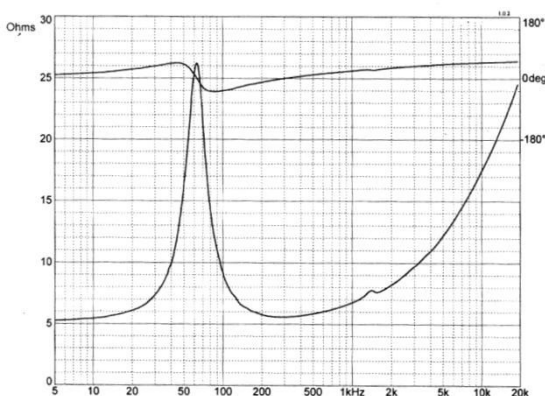
## Features

- \* Large Hexatech aluminum voice coil
- \* Double magnet system
- \* High power handling
- \* Shallow profile DCP cone

## Dimensions



A - Overall diameter	Ø 142 mm
B - Magnet diameter	Ø 84 mm
C - Flange thickness	5 mm
D - Overall height	52mm
E - Not Relevant	
F - Mounting holes location radius	54.9 mm
G - 4 Mounting holes, at 90° interval, inner hole diameter	Ø 4.2 mm



Measured on IEC baffle using Bruel & Kjaer 3144 model microphone.

Morel operate policy of continuous product design improvement, consequently specifications are subject to alteration without prior notice.